



DATE: Wednesday February 4, 2009

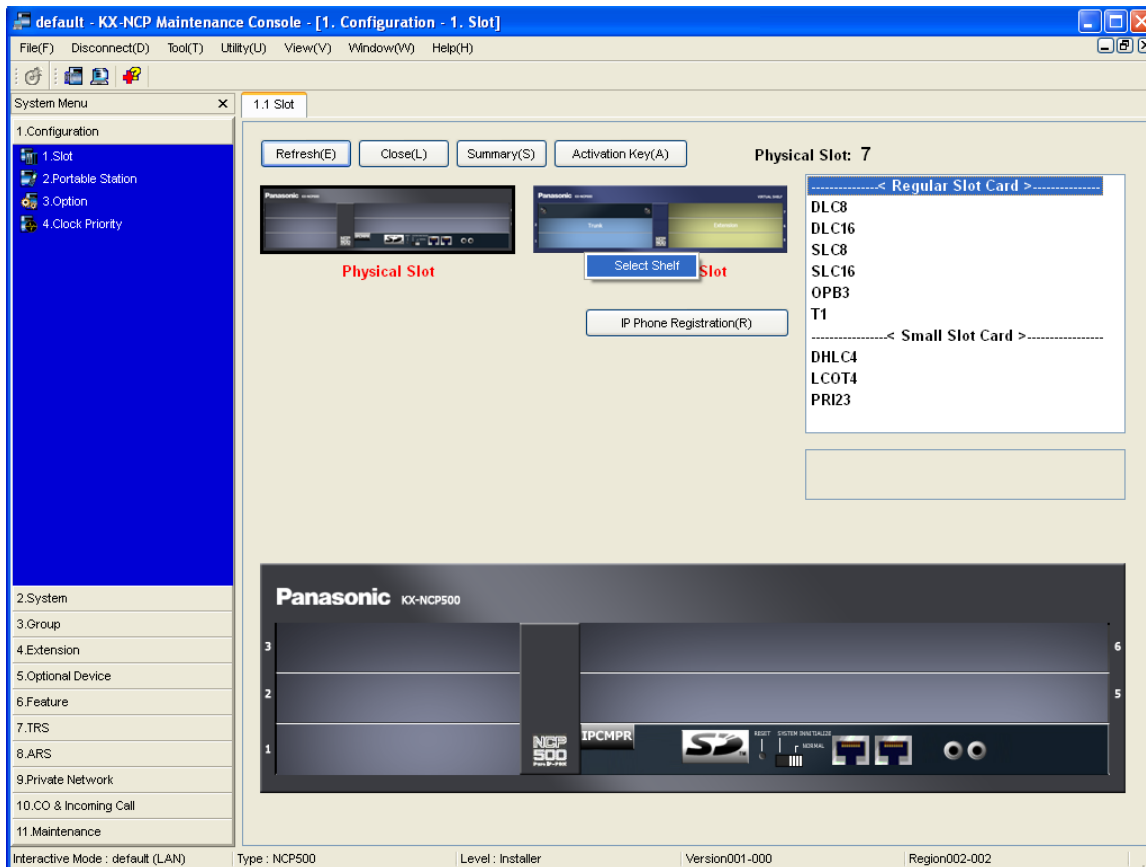
DOCUMENT NO. TN-KXTUPCMC-0408-1

Title: VOIP Ceiling Speaker

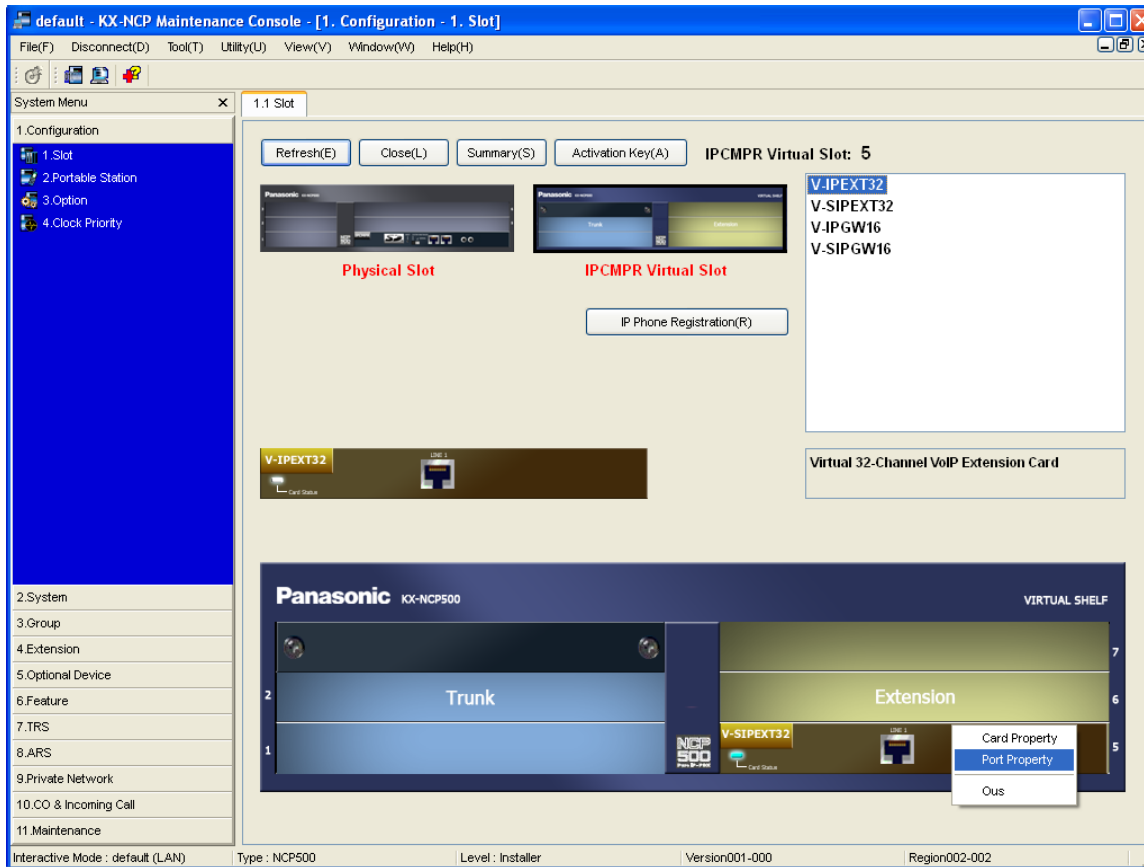
Systems Affected: KX-NCP 500/1000

Associated Tech Notes: None

1. Go to 1. Configuration – 1. Slot.
2. Move mouse over Virtual Slot and click on Select Shelf.



3. Install V-SIPEXT32 card into an empty slot.
4. Move mouse over V-SIPEXT32 card and click on Port Property.



5. Assign Password to SIP Extension you will be using.

The screenshot shows the 'Port Property - Virtual SIP Extension Port' configuration window. The main area contains a table with the following columns: No., Slot, Port, Extension Number, Password, Connection, Current IP Address, Bearer, Packet Sampling Time (G.711/G.722), and Packet Sampling Time (G.729A). The table lists 22 ports, with port 101 highlighted and its password set to 1234. The status of the connection for each port is shown in a dropdown menu, with 'INS' for port 101 and 'Fault' for all other ports.

No.	Slot	Port	Extension Number	Password	Connection	Current IP Address	Bearer	Packet Sampling Time (G.711/G.722)	Packet Sampling Time (G.729A)
1	5	1	101	1234	INS	192.168.0.78	Automatic	20 ms	20 ms
2	5	2	102	1234	Fault	192.168.0.9	Automatic	20 ms	20 ms
3	5	3	103		Fault	0.0.0.0	Automatic	20 ms	20 ms
4	5	4	104		Fault	0.0.0.0	Automatic	20 ms	20 ms
5	5	5	105		Fault	0.0.0.0	Automatic	20 ms	20 ms
6	5	6	106		Fault	0.0.0.0	Automatic	20 ms	20 ms
7	5	7	107		Fault	0.0.0.0	Automatic	20 ms	20 ms
8	5	8	108		Fault	0.0.0.0	Automatic	20 ms	20 ms
9	5	9	109		Fault	0.0.0.0	Automatic	20 ms	20 ms
10	5	10	110		Fault	0.0.0.0	Automatic	20 ms	20 ms
11	5	11	111		Fault	0.0.0.0	Automatic	20 ms	20 ms
12	5	12	112		Fault	0.0.0.0	Automatic	20 ms	20 ms
13	5	13	113		Fault	0.0.0.0	Automatic	20 ms	20 ms
14	5	14	114		Fault	0.0.0.0	Automatic	20 ms	20 ms
15	5	15	115		Fault	0.0.0.0	Automatic	20 ms	20 ms
16	5	16	116		Fault	0.0.0.0	Automatic	20 ms	20 ms
17	5	17	117		Fault	0.0.0.0	Automatic	20 ms	20 ms
18	5	18	118		Fault	0.0.0.0	Automatic	20 ms	20 ms
19	5	19	119		Fault	0.0.0.0	Automatic	20 ms	20 ms
20	5	20	120		Fault	0.0.0.0	Automatic	20 ms	20 ms
21	5	21	121		Fault	0.0.0.0	Automatic	20 ms	20 ms
22	5	22	122		Fault	0.0.0.0	Automatic	20 ms	20 ms

Interactive Mode : default (LAN) Type : NCP500 Level : Installer Version001-000 Region002-002

6. Log into VOIP Ceiling Speaker using default address of 192.168.3.10.
7. User Name and Password is “admin”
8. Click on Network Setup Button.
9. Assign IP Address, Subnet Mask, and Default Gateway of the VOIP Ceiling Speaker.
10. Click on Save Settings Button.
 - a. Note: If you changed IP Address you will have to log back in with the new IP Address.



11. Click on SIP Setup button.
12. Set SIP Server as IP Address of ICMPR card.
13. Set SIP User ID as Extension number of SIP Extension to be used.
14. Set Authenticate ID as the same Extension number in step 13.
15. Set Authenticate Password as the same password assigned in step 5.
16. Click on Save Settings button.

CyberData Corporation
VOIP CEILING SPEAKER

SIP Setup

SIP Server:	<input type="text" value="192.168.0.101"/>	*
Outbound Proxy:	<input type="text"/>	*
Remote SIP Port:	<input type="text" value="5060"/>	*
Local SIP Port:	<input type="text" value="5060"/>	*
SIP User ID:	<input type="text" value="101"/>	*
Authenticate ID:	<input type="text" value="101"/>	*
Authenticate Password:	<input type="text" value="1234"/>	*
SIP Registration:	<input checked="" type="radio"/> Yes <input type="radio"/> No	*
Unregister on Reboot:	<input type="radio"/> Yes <input checked="" type="radio"/> No	*
Register Expiration (minutes):	<input type="text" value="60"/>	*

** changing this parameter causes system reboot when saved*

[Save Settings](#)

Done Internet 100%