



*Zultys MX250 and
Cyberdata VoIP Outdoor, Indoor and
Emergency Intercom
Setup Guide
CyberData Document Part #930306A*

1. Setup Procedure

1.1. CyberData Configuration

- 1.1.1. Login to CyberData Configuration home page (Figure 1) by pointing your browser to the intercom's IP address. The CyberData VoIP Outdoor Intercom default IP is 192.1683.10.
- 1.1.2. When prompted, type the user name and password to log into the CyberData VoIP Outdoor Intercom homepage. The default user name and password are:

User name	admin
Password	admin

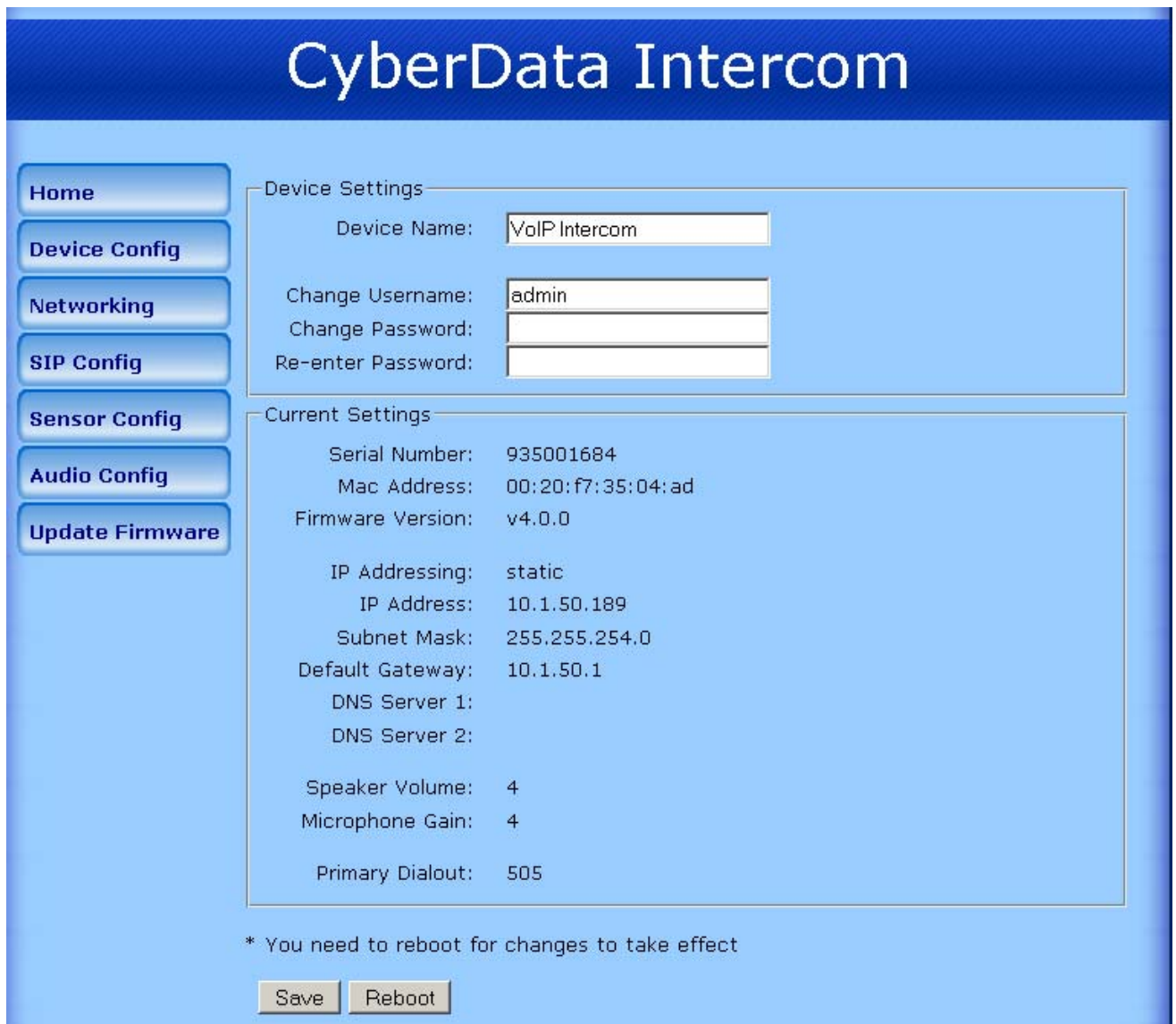


Figure 1. CyberData VoIP Outdoor Intercom Home Page

1.1.3. Verify and configure network settings for the intercom. That can be done on the Networking page. Sample configuration is shown on Figure 2.

CyberData Intercom

Home Network Configuration

Device Config

Networking

SIP Config

Sensor Config

Audio Config

Update Firmware

Network Settings

IP Addressing: Static DHCP

IP Address: 10.1.50.189

Subnet Mask: 255.255.254.0

Default Gateway: 10.1.50.1

DNS Server 1:

DNS Server 2:

* You need to reboot for changes to take effect

Save Reboot

Figure 2. CyberData VoIP Outdoor Intercom Network Setup Page

1.1.4. Verify and configure SIP settings for the speaker. That can be done on the SIP Configuration page (Figure 3).

- In the **SIP Server** field type the IP address of the MX250 Server (such as 10.1.16.25)
- In the **Outbound Proxy** field type the IP address of SIP proxy that might be used between the MX250 and CyberData Outdoor Intercom. This step is optional and is not required in majority of installations.
- In the **Remote SIP Port** field type the SIP port of MX250. Default value for the MX250 is 5060.
- In the **Local SIP Port** field type 5060.
- In the **SIP User ID** field type SIP Device ID provisioned on the MX250 for this device (DoorIntercom for example)
- In the **Authenticate ID** field type the same value as in SIP User ID field above. This step is optional and depends on whether authentication of devices is enforced on the MX250 or not.
- If the authentication is enabled on the MX250 enter the authentication password into the **Authenticate Password** field. It should be the same as configured for the device on MX250 (for more details see 1.2.2).
- Set both **Register with a SIP Server** and **Unregister on Reboot** checkboxes to Yes.

- Set **Register Expiration** to the same value as configured on MX250 at
- Set **Dial out Extension** to any extension provisioned on the MX250.

Provision / SIP and RTP / SIP Timers / SIP Registration

The default value is 3600 seconds.

CyberData Intercom

Home | Device Config | Networking | **SIP Config** | Sensor Config | Audio Config | Update Firmware

SIP Configuration

SIP Settings

SIP Server:	10.1.16.25
Outbound Proxy:	10.1.16.25
Remote SIP Port:	5060
Local SIP Port:	5060
SIP User ID:	DoorIntercom
Authenticate ID:	DoorIntercom
Authenticate Password:	cyb23dooricom

Register with a SIP Server:

Re-registration Interval (in seconds): 3600

Unregister on Reboot:

Dial Out Settings

Dial out Extension:	505
Extension ID:	

* You need to reboot for changes to take effect

Save Reboot

Figure 3. CyberData VoIP Outdoor Intercom SIP Configuration Page

1.2. MX250 Configuration

- 1.2.1. Create Generic Device Profile under *Configure / Devices / Profiles* as shown on the Figure 4.

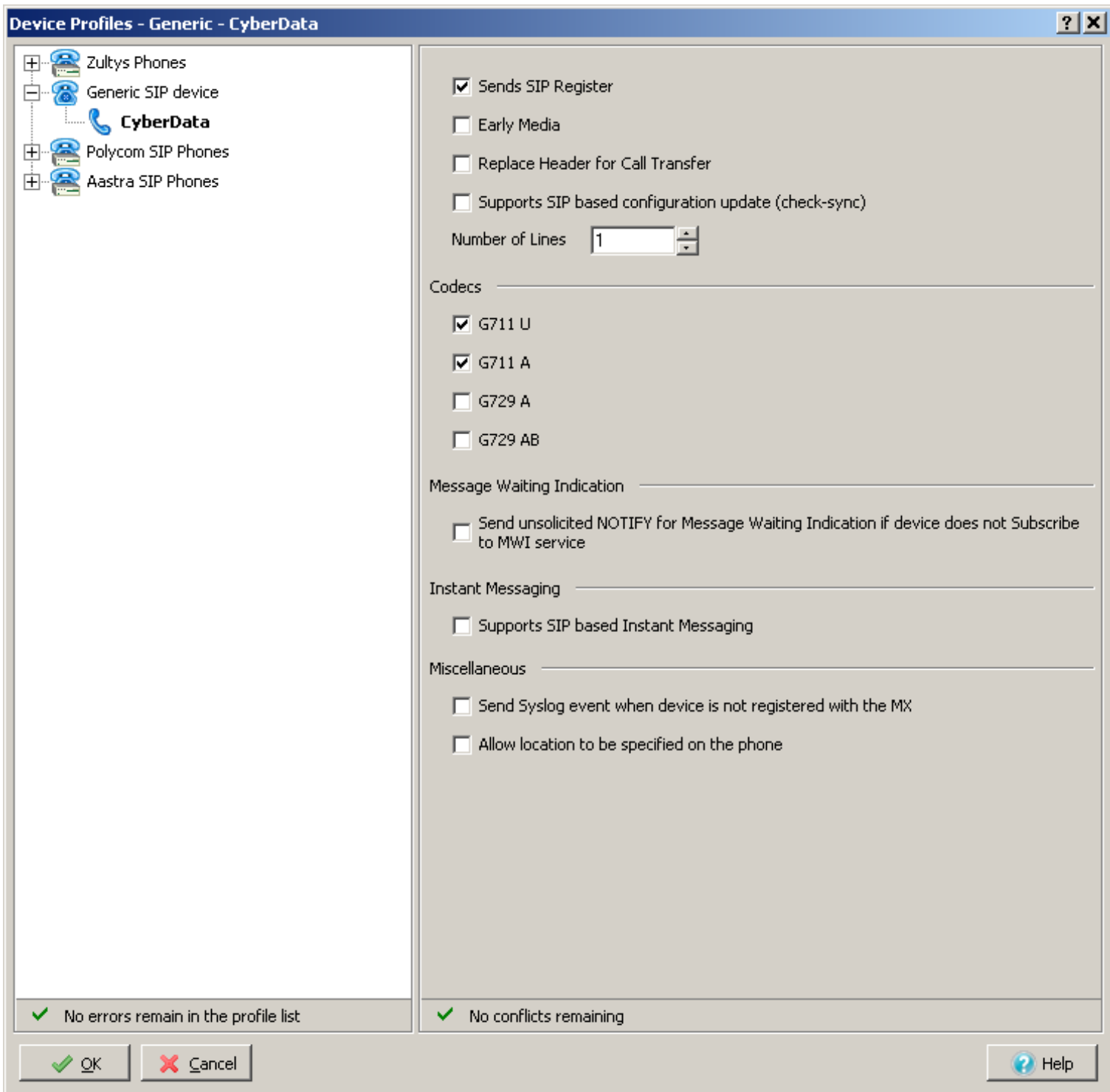


Figure 4. MX250 Generic Device Profile

- 1.2.2. Create Generic Device based on the created Device Profile. Use any name for the Device ID. If authentication of devices is enforced then SIP Proxy Password must be configured. It's highly recommended not to use passwords less than 8 symbols long. Sample device configuration is illustrated on Figure 5.

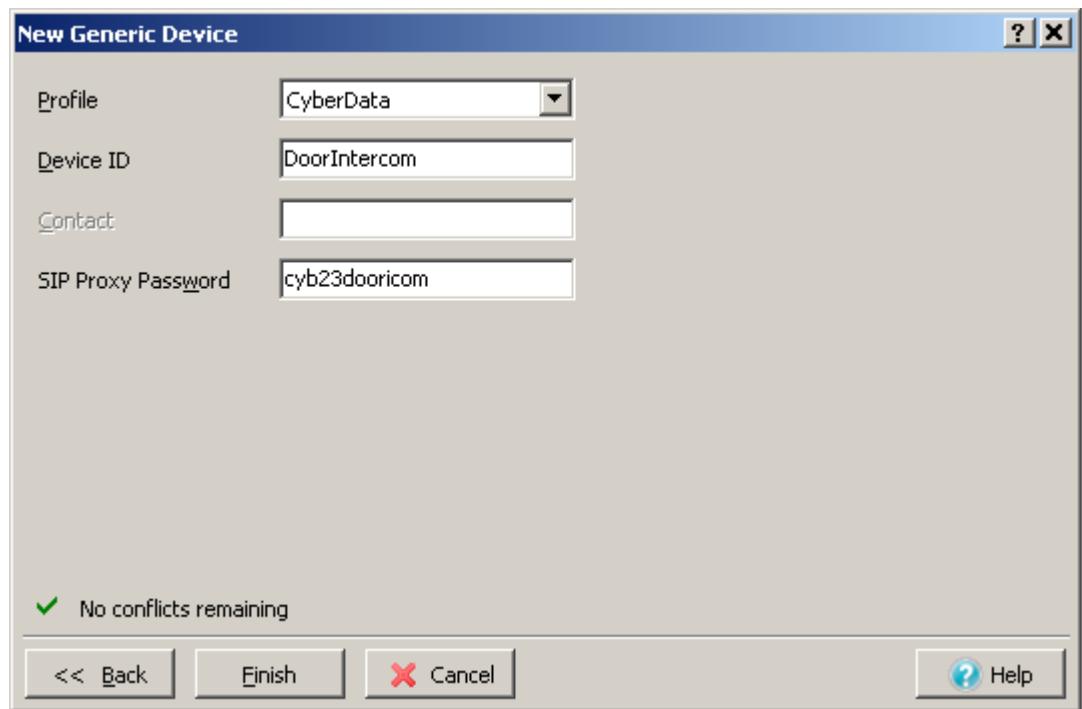


Figure 5. MX250 Generic Device

1.2.3. After the step 1.2.2 is completed the Cyberdata Voip Outdoor Intercom will be able to boot up, register with the MX250 and place calls to the Dial out Extension provisioned in 1.1.4. Now to make a call to the device it should be assigned to any user provisioned on the MX250.

For more details on how to configure users please refer to the MX250 Administrator's manual available from <http://kbs.zultys.com>