



*Zultys MX250 and
Cyberdata VoIP Ceiling Speaker
Setup Guide
CyberData Document Part #930305A*

1. Setup Procedure

1.1. CyberData Configuration

- 1.1.1. Login to CyberData Configuration home page (Figure 1) by pointing your browser to the speaker's IP address. The CyberData VoIP Ceiling Speaker default IP is 192.1683.10.

Alternatively you may learn the IP address of the device by pressing RTFM button. The steps are:

- a. Press and hold RTFM switch until it beeps (after 1 second)
- b. Release the switch to hear the IP announcement

- 1.1.2. When prompted, type the user name and password to log into the CyberData VoIP Ceiling Speaker homepage. The default user name and password are:

User name	admin
Pasword	admin



Figure 1. CyberData VoIP Ceiling Speaker Home Page

1.1.3. Verify and configure network settings for the speaker. That can be done on the Network Setup page. Sample configuration is shown on Figure 2.

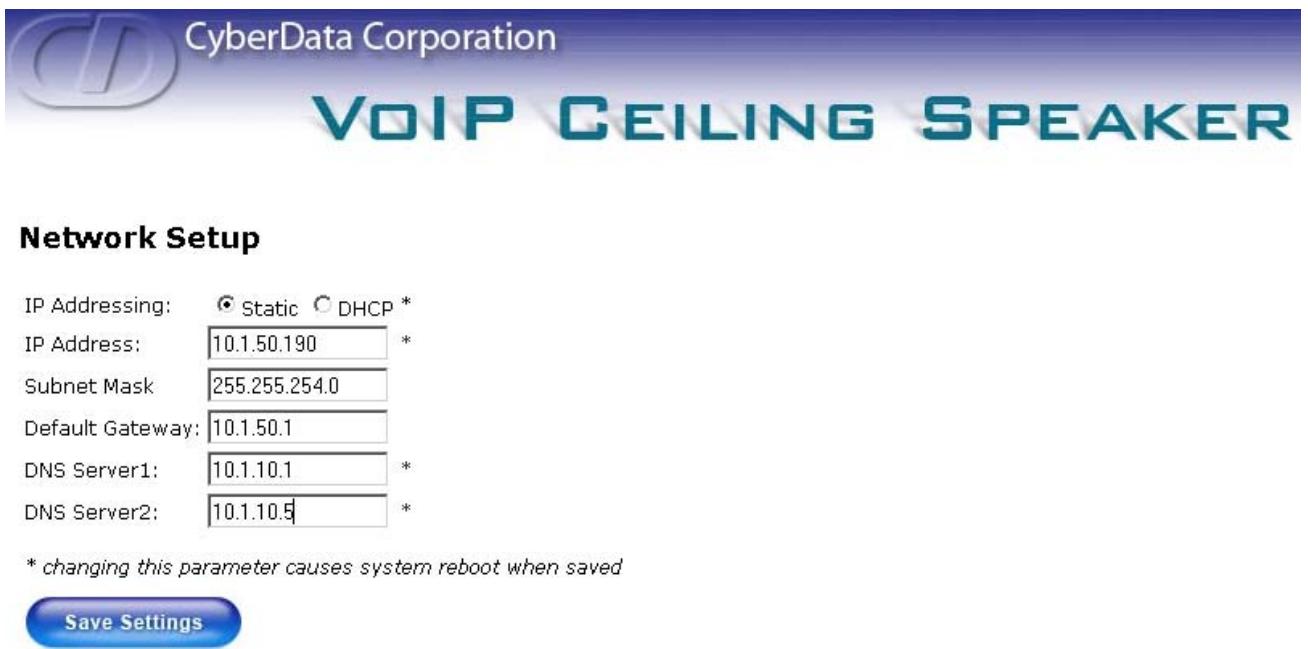


Figure 2. CyberData VoIP Ceiling Speaker Network Setup Page

1.1.4. Verify and configure SIP settings for the speaker. That can be done on the SIP Setup page (Figure 3).

- In the **SIP Server** field type the IP address of the MX250 Server (such as 10.1.16.25)
- In the **Outbound Proxy** field type the IP address of SIP proxy that might be used between the MX250 and CyberData Ceiling Speaker. This step is optional and is not required in majority of installations.
- In the **Remote SIP Port** field type the SIP port of MX250. Default value for the MX250 is 5060.
- In the **Local SIP Port** field type 5060.
- In the **SIP User ID** field type SIP Device ID provisioned on the MX250 for this device (CeilingSpeaker for example)
- In the **Authenticate ID** field type the same value as in SIP User ID field above. This step is optional and depends on whether authentication of devices is enforced on the MX250 or not.
- If the authentication is enabled on the MX250 enter the authentication password into the **Authenticate Password** field. It should be the same as configured for the device on MX250 (for more details see 1.2.2).
- Set both **SIP Registration** and **Unregister on Reboot** checkboxes to Yes.
- Set **Register Expiration** to the same value as configured on MX250 at

Provision / SIP and RTP / SIP Timers / SIP Registration

The default value is 60 minutes.

SIP Setup

SIP Server:	<input type="text" value="10.1.16.25"/>	*
Outbound Proxy:	<input type="text" value="10.1.16.25"/>	*
Remote SIP Port:	<input type="text" value="5060"/>	*
Local SIP Port:	<input type="text" value="5060"/>	*
SIP User ID:	<input type="text" value="CeilingSpeaker"/>	*
Authenticate ID:	<input type="text" value="CeilingSpeaker"/>	*
Authenticate Password:	<input type="text" value="cyb23speaker"/>	*
SIP Registration:	<input checked="" type="radio"/> Yes <input type="radio"/> No	*
Unregister on Reboot:	<input checked="" type="radio"/> Yes <input type="radio"/> No	*
Register Expiration (minutes):	<input type="text" value="60"/>	*

** changing this parameter causes system reboot when saved*

Save Settings

Figure 3. CyberData VoIP Ceiling SIP Setup Page

1.2. MX250 Configuration

- 1.2.1. Create Generic Device Profile under *Configure / Devices / Profiles* as shown on the Figure 4.

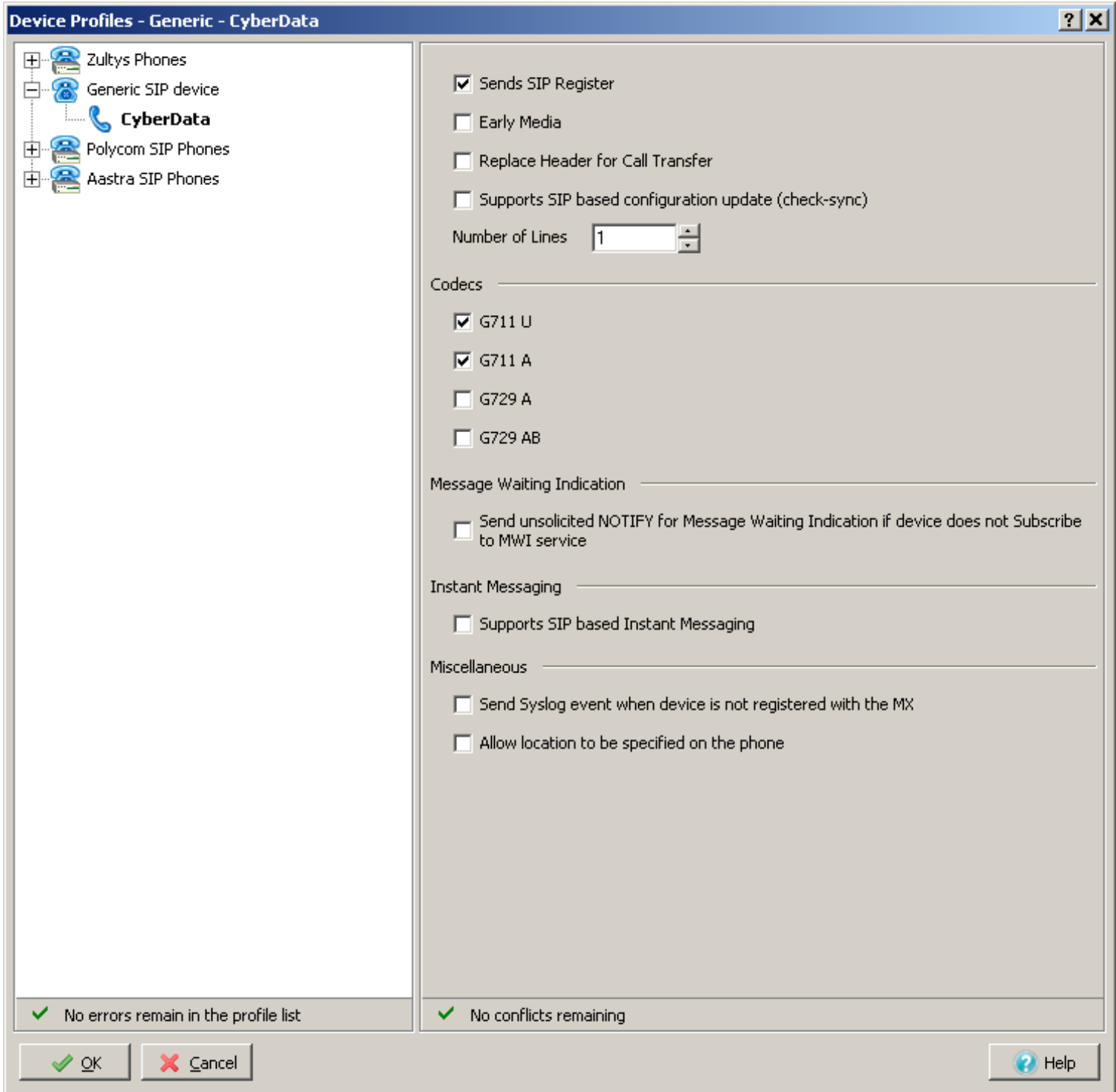
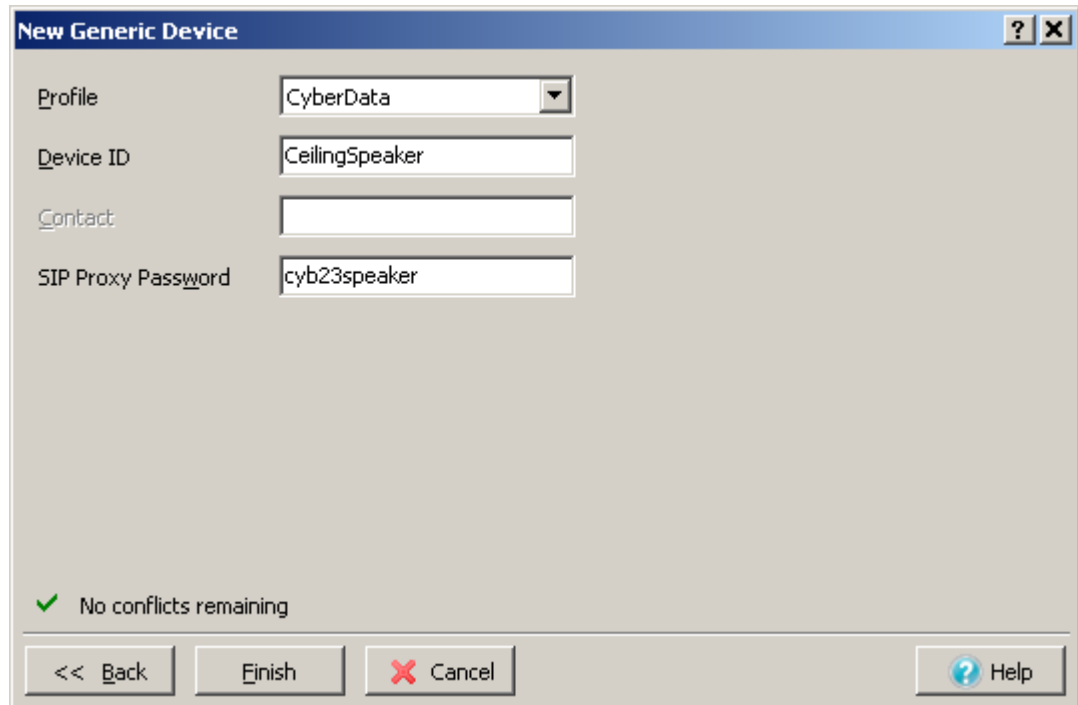


Figure 4. MX250 Generic Device Profile

1.2.2. Create Generic Device based on the created Device Profile. Use any name for the Device ID. If authentication of devices is enforced then SIP Proxy

Password must be configured. It's highly recommended not to use passwords less than 8 symbols long.
Sample device configuration is illustrated on Figure 5.



The screenshot shows a configuration window titled "New Generic Device". It has a blue header bar with a question mark and a close button. The main area contains four fields: "Profile" (a dropdown menu showing "CyberData"), "Device ID" (a text box containing "CeilingSpeaker"), "Contact" (an empty text box), and "SIP Proxy Password" (a text box containing "cyb23speaker"). At the bottom left, there is a green checkmark and the text "No conflicts remaining". At the bottom right, there are four buttons: "<< Back", "Finish", "Cancel", and "Help".

Figure 5. MX250 Generic Device

- 1.2.3. After the step 1.2.2 is completed the Cyberdata Voip Ceiling Speaker will be able to boot up and register with the MX250. Now to make a call to the device or add it to the paging group it should be assigned to any user that is a member of a paging group.

For more details on how to configure users and setup paging groups please refer to the MX250 Administrator's manual available from <http://kbs.zultys.com>