

CyberData

The IP Endpoint Company

Configuring the CyberData VoIP V2 Ceiling Speaker for eOn's eConn IP-PBX

1.0 Configuring the CyberData Device to eOn's eConn IP-PBX

1.1 Introduction

This document has been written to provide simple instructions for integrating eOn's eConn IP-PBX with the CyberData VoIP Ceiling Speaker. The integration allows users to initiate directed and multicast paging from any port within the system, be it IP station, analog station, or IP/analog/digital trunk.

1.2 Requirements

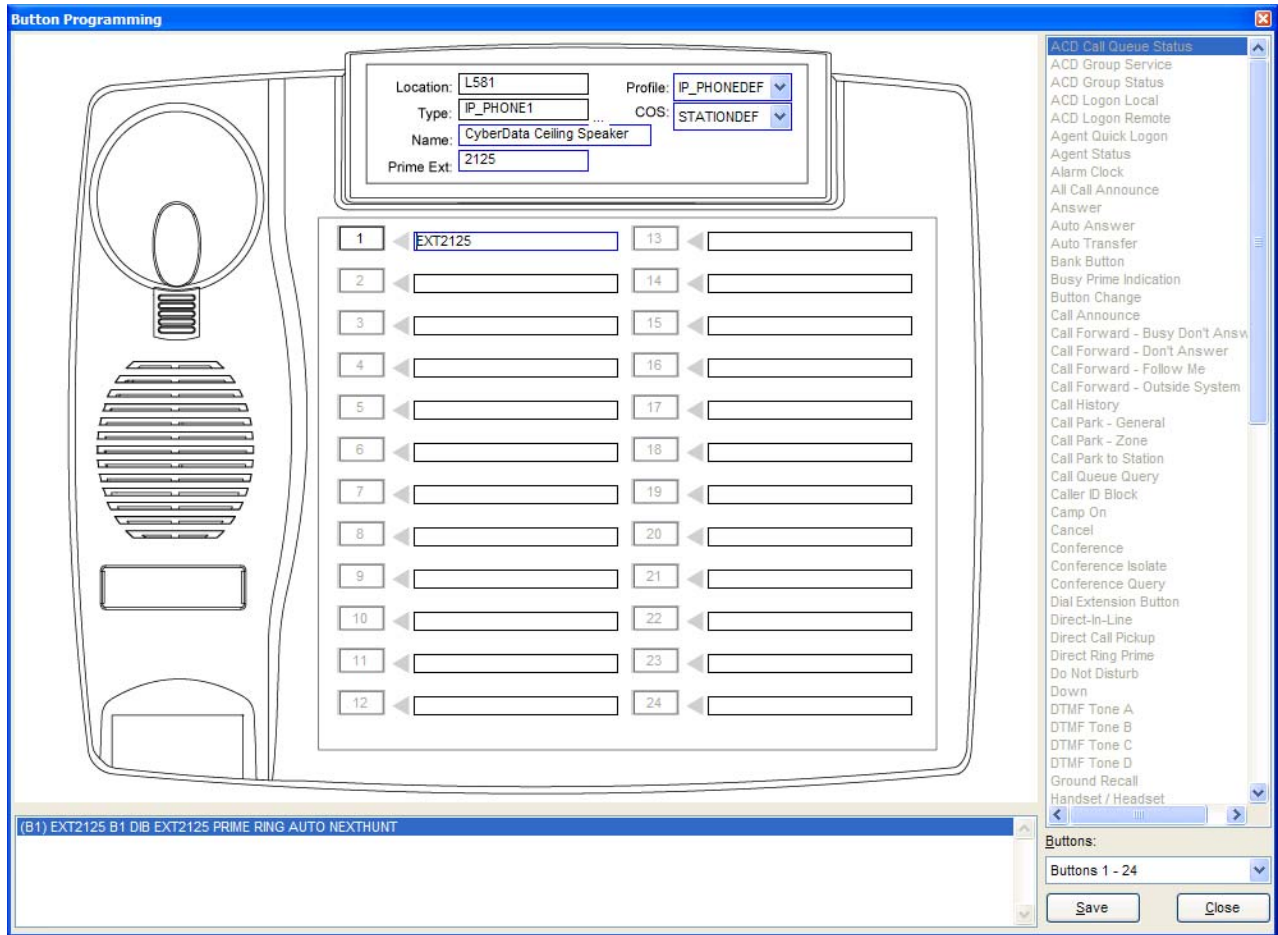
The user must insure that sufficient G.711 or G.729 licenses to support the additional port(s) required in registering the CyberData Ceiling Speaker with the eConn-IP-PBX are available on the system.

1.3 eConn Configuration

Configuration of the eConn can be made as simple or complex as your situation requires. In the simplest sense, a port is created as type IP_PHONE1, given a prime extension along with default Profile and COS values. All paging is then initiated by dialing the extension number of this port. If desired, access may be restricted by implementing other means available within eConn programming. Please contact eOn (support@eoncc.com) for any additional support you may require.

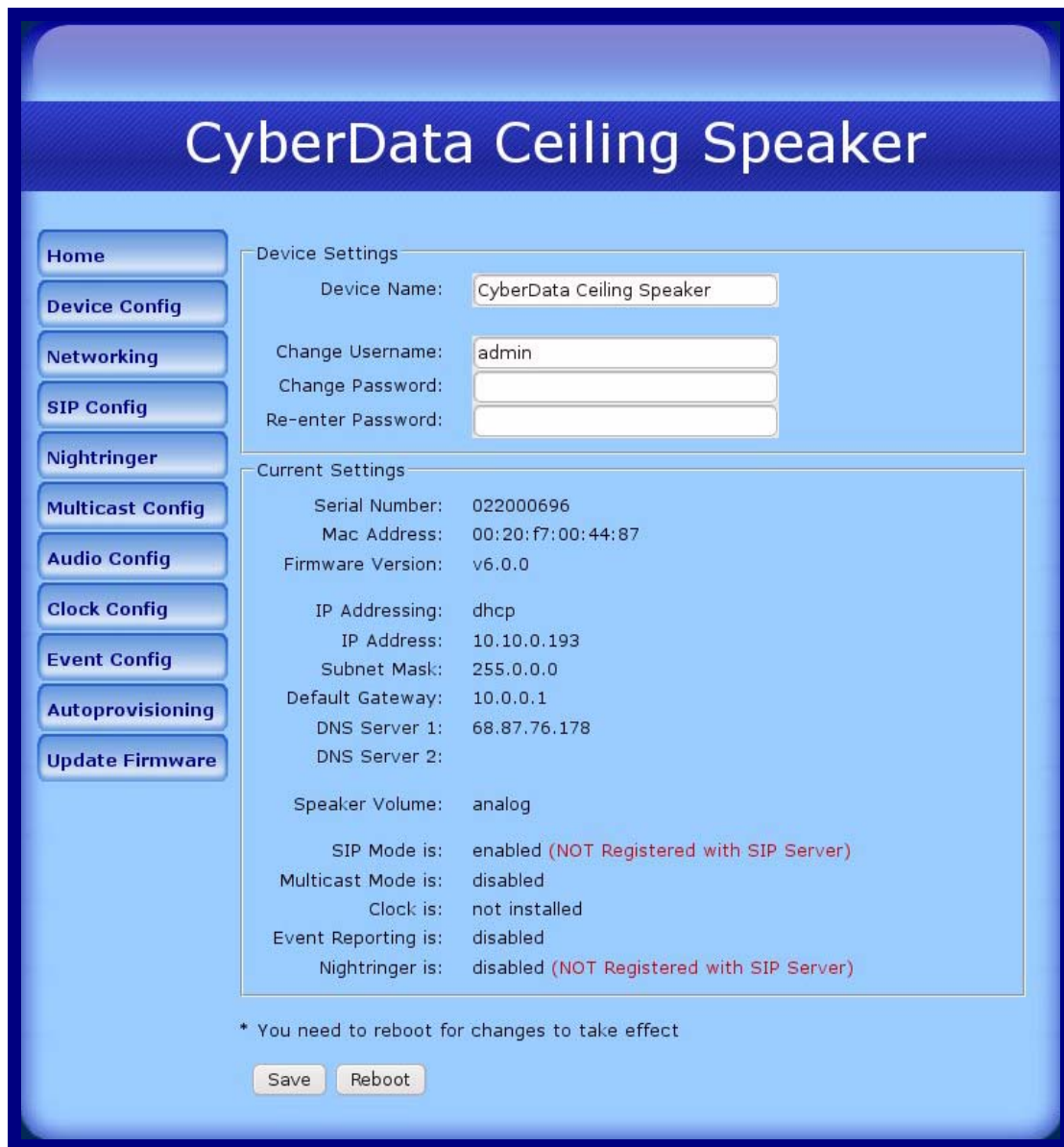
The eConn GUI screenshot (Figure 1) illustrates the simplicity in configuring a basic port to be used in initiating pages via the CyberData V2 Ceiling Speaker.

Figure 1. Configuring a Basic Port



1.4 CyberData Ceiling Speaker Home Page

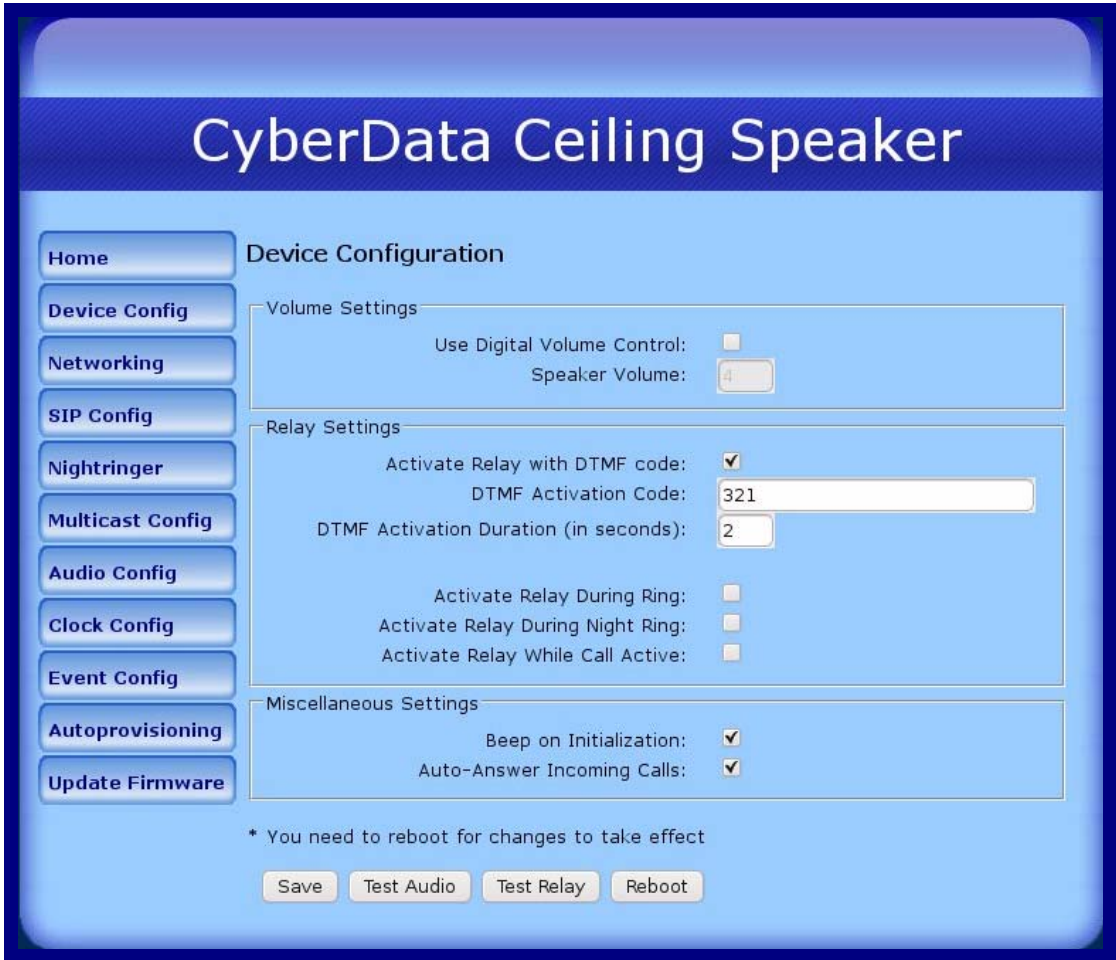
Figure 2. Home Page



Following CyberData's setup instructions, the screen above shows the home screen for the ceiling speaker that has been interfaced with the eConn IP-PBX and connected to the network using DHCP. This screen is accessed by browsing to the IP address associated with this device and shows Network information as well as registration status. The device's configuration screens may be password protected.

1.5 CyberData Device Configuration

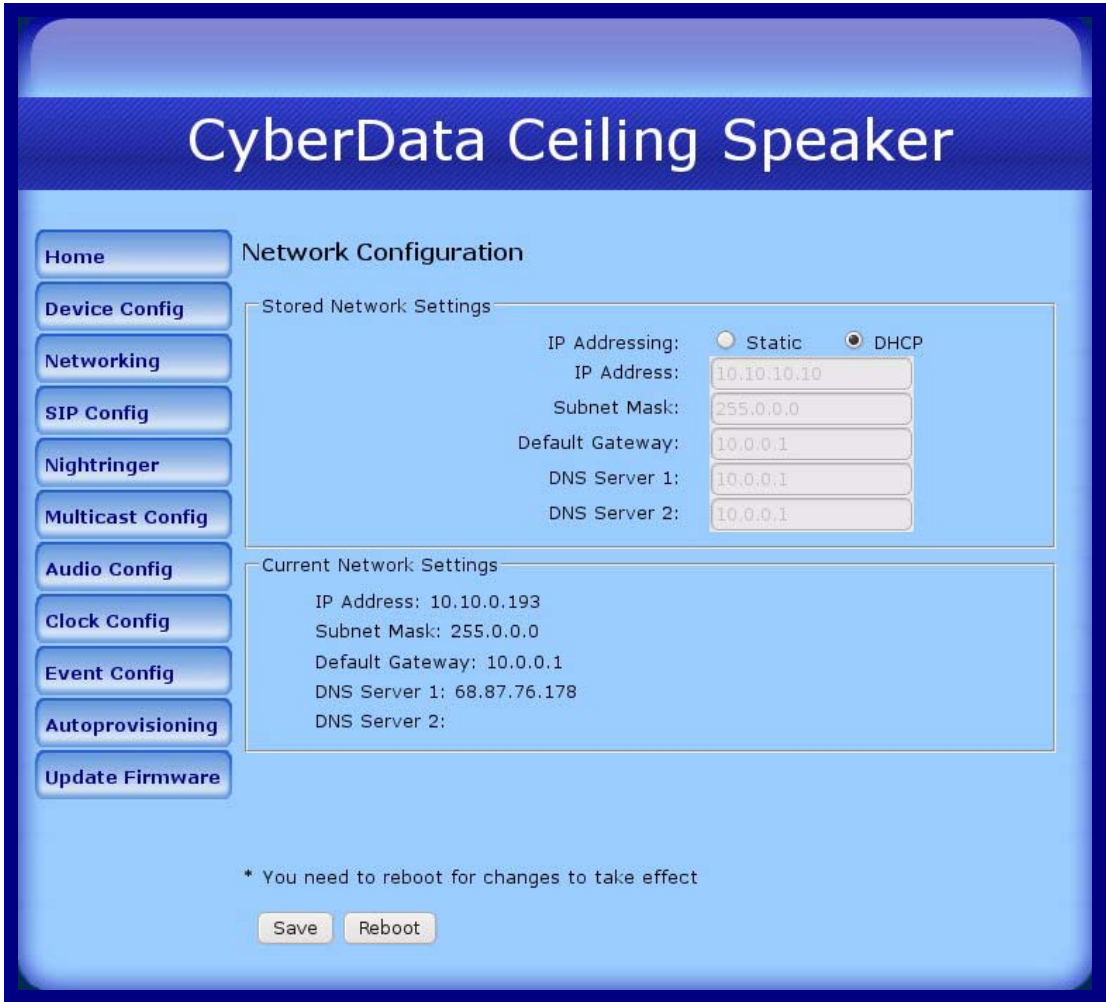
Figure 3. Device Configuration Page



Using the Device Configuration screen, we are able to address relay settings as well as other connection information.

1.6 CyberData Network Configuration

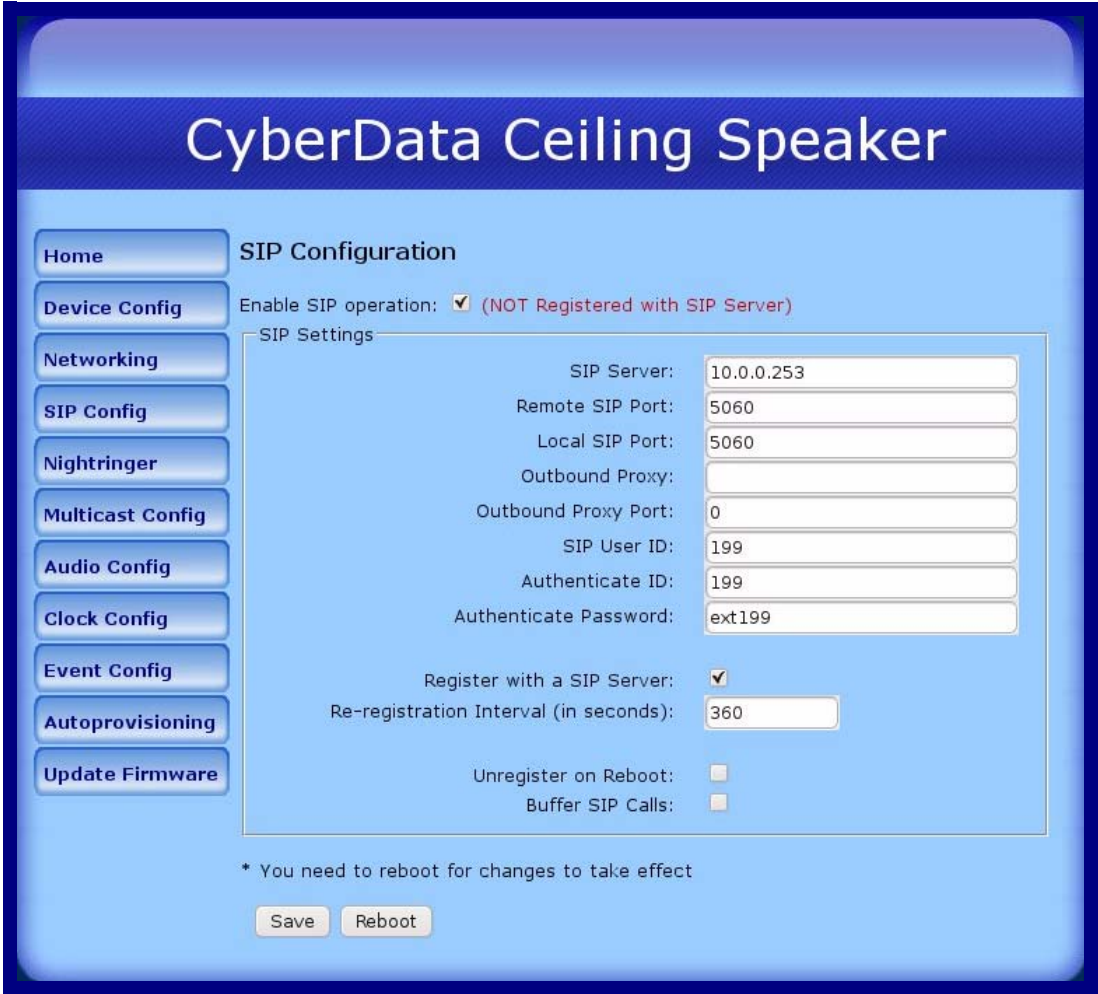
Figure 4. Network Configuration Page



The Network Configuration screen can be used to enable DHCP or assign static network addressing for this device. If DHCP is enabled, the device has a mode to enunciate its IP address information to the user after invocation.

1.7 CyberData SIP Configuration

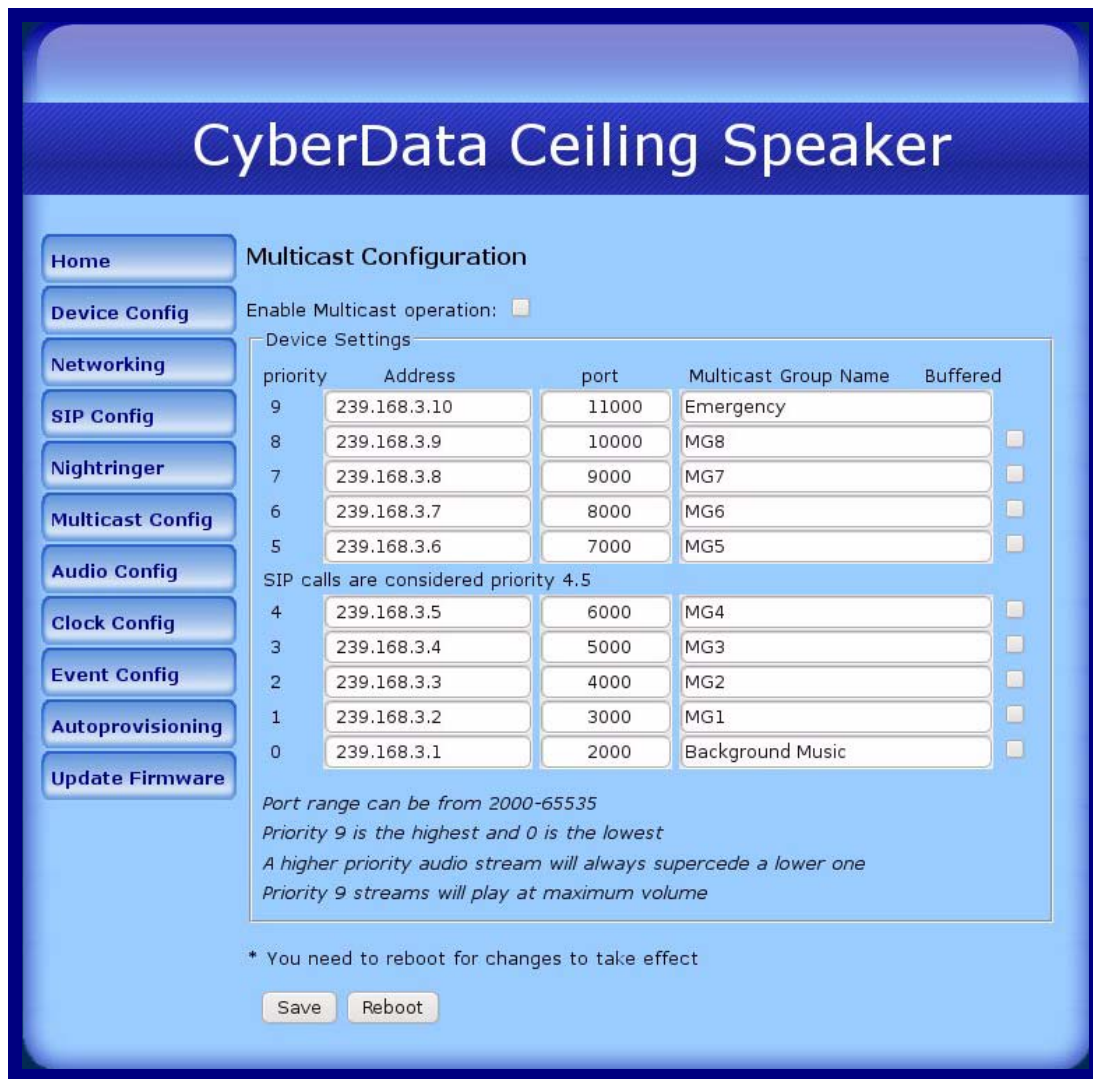
Figure 5. SIP Configuration Page



The SIP Configuration page is used to specify the IP address and port of the eConn IP-PBX as well as the prime extension that it will use in registering to the PBX. Registration Expiry timer is found here as well and should be set to a value less than set in the host PBX.

1.8 CyberData Multicast Configuration

Figure 6. Multicast Configuration Page



Multicast configuration is used to associate this device with other paging devices for use in zone paging. The particular zones are defined in the CyberData Paging Server and then each respective paging device uses its Multicast Configuration screen to create the association using the defined Multicast IP addresses and ports created in the paging server. Essentially by doing this, the device listens to all packets and reacts to those having the multicast information matching that defined above.

A user would dial the extension associated with the paging server, hear a tone, dial the zone number desired, hear a 2nd tone and speak their message, which would then be broadcast by all devices having address/port attributes associated with the zone the user entered. See CyberData's reference manual for a full explanation of the configuration.