



IBM SI/O 7-Port Hub

Legacy migration with today's open system connectivity

The IBM SI/O II Hub enables users of IBM 4680 and 4690 series POS terminals to connect their existing IBM RS-485 peripherals to a standard PC via a single USB connection.

As computer technology changes, the PC can be replaced without affecting retail peripheral connectivity. This allows the user to choose their own computer rather than being locked into a retail specific computer costing more money.



Built-in Power Supply

A wide range AC input 230 watt power supply provides ample power for a full complement of IBM peripherals and devices. This Hub's power supply has been designed to provide enough power to support all attached peripherals.

Compatibility

USB 1.1 compliant.

Support of Windows standby mode operation which controls the power to the attached peripherals.

IBM PC Windows 98SE/2000/XP.

OPOS drivers supported.

IBM SI/O Ports

5A	Keyboard
4A	Display
4B	Display
9A	OEM scanner, signature capture, etc
9B	OEM scanner, signature capture, etc
7	Printer
3A	Cash drawer

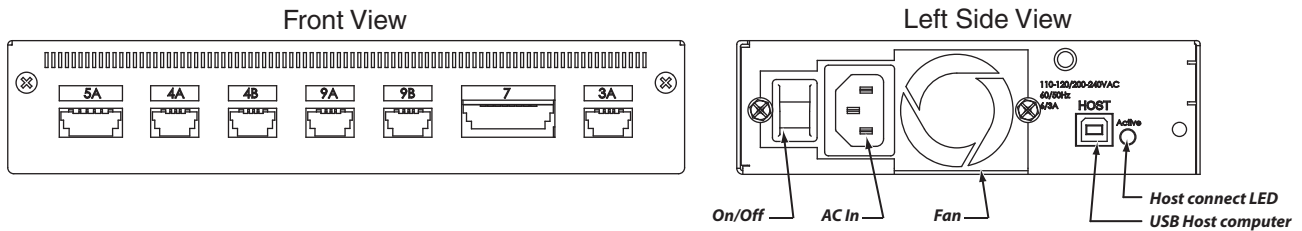
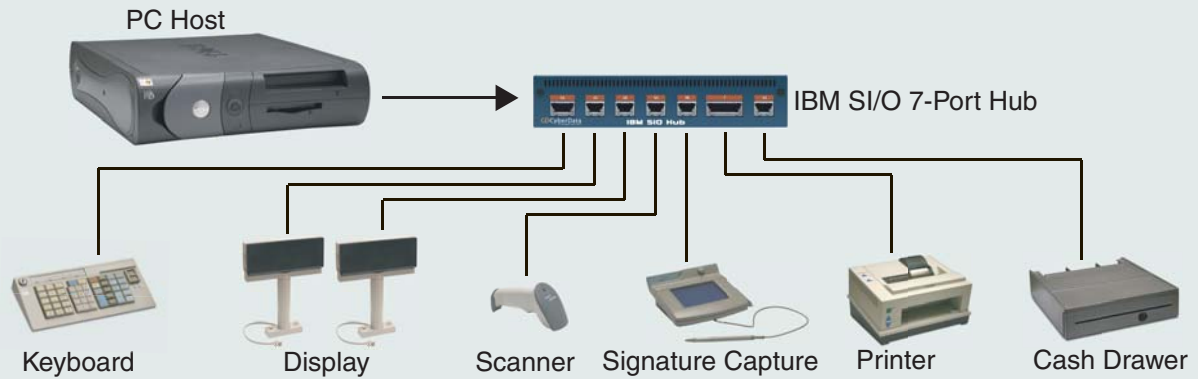
IBM SI/O 7-Port Hub Specifications

AC Voltage	90 VAC to 260 VAC 60/50 Hz
Regulatory Compliance	FCC Class A & UL 60950
Warranty	2 years limited
Part Number	010658



IBM SI/O 7-Port Hub

Typical Installation



AC Cable

The AC connection is a standard IEC type.

Input Requirements:

Voltage: 100 ~120 VAC or 200 ~ 240 VAC Auto Switching

Frequency: 50 / 60 Hz

Input Current: 6.0A (RMS) for 115VAC or 3.0A (RMS) for 230VAC

Host Connector

The Host connector is a standard USB "A" to "B" type cable. Maximum length is 6 meters (20 feet) with good quality cable.